



OPC/DDE Interface

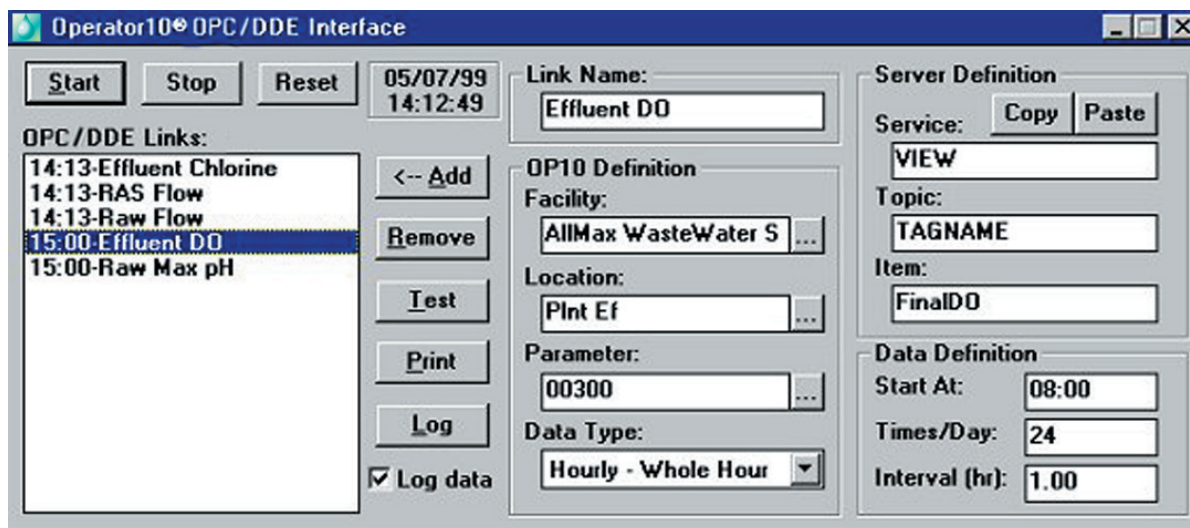
Dynamic Data Exchange (DDE)/OLE for Process Control (OPC) Interface Application

AIMax has an OPC/DDE interface available, allowing you to enter data via any SCADA system or other OPC/DDE compatible application without manually having to re-enter your data in Operator10® software.

Data can be exchanged with any running application that supports OPC/DDE linking using the ASCII text format. Examples are:

Microsoft® Excel®	Microsoft Access®
Microsoft Word®	FactoryLink®
Wonderware® InTouch®	LookOut®
Intellution Fix®	Citect®
RSLinx®	FMT

Below is an example of a OPC/DDE interface application setup using Wonderware InTouch Viewer.



In this example, a reading of the “Effluent DO” meter is taken 24 times per day at one-hour intervals. These values are then placed in the Operator10 database in the location: parameter of “Plnt Ef” (Plant Effluent), “00300” (dissolved oxygen).

The OPC/DDE interface is a separate client/server application that can be used both to retrieve data on a daily or periodic (real time) basis, and to allow OPC/DDE access to Operator10 data values. Since the OPC/DDE interface application is able to both share and retrieve data, it is technically known as both a client and a server.

Software you can depend on.

AIMax
Software

OPC/DDE Interface

